

# *Jupiter Antiques*

## *The Nineteenth Century*

20-02-26 10 am  
[www.jupiterantiques.co.uk](http://www.jupiterantiques.co.uk)



Copeland plate of Prince of Wales service type, having pierced basketweave border, jewelled and picked out in tooled gold, four oval panels painted with fruit and flowers by C F Hurten, c. 1865, green mark 9 ins. D.



1. Worcester Flight Barr and Barr teacup and saucer painted with a landscape 'The Deserted Village' after Oliver Goldsmith, probably painted by Samuel Smith c. 1820-25 6 ins. D. (S)



2. Worcester Flight Barr and Barr cup and saucer painted in gilt octagonal panels with shells and seaweed on a blue green ground with a white and gilt border c. 1817-25 5.1 ins. D. (S)





3. Coalport two handled mug or loving cup with a large bird of prey clinging to a rock cliff, a castle turret in the distance, painted by John Randall, c. 1860-75 (Ampersand mark) 5.25 ins. H. NB. About 1760 John Randall started painting naturalistic birds, these birds are held in high regard.



4. Coalport magnificent Sevres style tureen and cover with richly gilded handles, painted with waterfowl and wild birds in four panels on a rose pompadour ground by John Randall, Ampersand mark c.1765 9 ins. W.



5. Coalport fine Regency style tureen, painted with alternating birds and flowers, the cover with gilded eagle similarly painted, and the stand with four gilded lions painted with a gilt and blue ground c. 1820-25 No mark 7.5 ins. W.



6. Coalport fine Sevres style sucrier and cover painted with flowers on a blue ground, c. 1825-45, CBD mark 3.6 ins. H.





7. Chamberlain's Worcester two handled vase, the light blue ground painted on each side with a large bouquet of roses and rose buds, the vase heavily gilded  
c. 1820 10.75 ins. H.



8. Chamberlain's Worcester two handled vase, the cobalt blue ground painted each side with a fancy bird, and three moth painted smaller panels painted between each panel, four moths painted on the base c. 1810 8.1 ins. H.



9. Herculaneum coffee can and saucer with salmon ground, the can with a rose and the saucer with yellow flower c. 1810 5.5 ins. D. (S)



10. Chamberlain's Worcester coffee cup, teacup and saucer painted in the rare "Independence" pattern, each piece having an eagle perched on a branch, on a floriferous tree. c. 1815 5.5 ins. D. (S)





11. Flight Barr and Barr Worcester two handled cup and saucer painted with 'The Shepherd Boy' on a lime green ground c. 1820-25 5.3 ins. D. (S)



12. Worcester Flight Barr cup and saucer with very ornate gilding on a cobalt blue ground 1820-25 No mark 5.9 ins. D. (S)



13. Worcester Barr Flight Barr vase with separate matching base painted en grisaille with a cottage scene, the salmon ground gilded with stars and small dots c. 1803 Incised 'B' 5.5 ins. H.



14. Chamberlain Worcester coffee cup and saucer painted view of a stately home Holly Mount, Malvern in landscape, the ground with a green and gilt scrolling design, Script Chamberlain's Worcester, c. 1810, 6.13 ins. D. (S)





15. Spode Image Handled cabinet cup and saucer, the handle modelled as a winged caryatid, decorated with coloured flowers on a rich blue ground, Spode 2573, c. 1820 5.5 ins. D. (S)

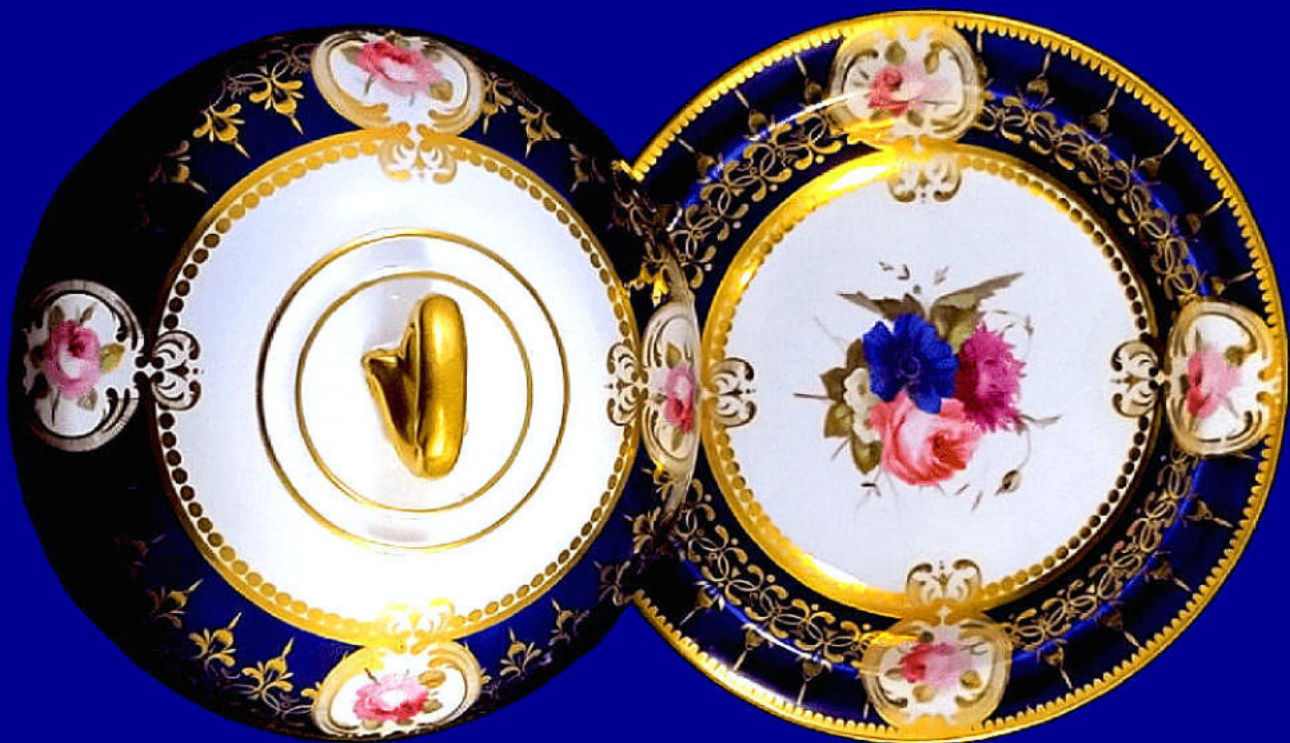


16. Spode violeteer and cover, of oval form with shaped rims and entwined handles, the cover pierced with regularly spaced holes, richly decorated with pattern 1166 of colourful flower sprays reserved on a deep blue ground gilded with overlapping scales and a similar imari pattern 967 violeteer and cover c. 1815-20 4.25 ins. W.





17. Spode teapot, cover and stand of octagonal shape moulded with flowers, painted with large floral bouquets, pattern 2527 c. 1815-20 9.5 ins. W.



18. Chamberlain Worcester muffin dish and cover painted with roses and ornate gilding Pattern 864, c. 1815 Mark: Worcester & 155 New Bond Street, London. 7.8 ins. D.





19. Worcester Flight period rare plates each decorated with the Prince of Wales feathers, the first painted with three feathers, the second with five feathers. The plates may have originated from two different services c. 1780  
Both plates are 8.75 ins. D.



20. Flight Barr & Barr plate painted and gilded with an elaborate imari pattern having birds, a fence, holed rock and flowers under a gilt and burnt orange border c.1815. 8 ins. D.



21. Worcester Flight Barr and Barr small bowl on three feet and saucer, with four raised gilt panels painted shells and seaweed Script mark, c. 1820-35, 4.25 ins. D. (S)



22. Worcester Flight Barr and Barr small cabinet cup and saucer, painted with a view of Malvern on a plum ground, Printed mark c. 1820-35 4.13 ins. D. (S)





23. Copeland Sevres style coffee cup and saucer painted with a sage green ground, elaborately decorated with raised gilding, the flowers painted in great detail, Copeland in green c. 1870, 5.5 ins. D. (S)



24. Copeland Spode very fine pedestal three handled bowl painted with a band of flowers on a brown background, the base with neoclassical gilding, c. 1890's, Copeland Spode China mark, 8.25 ins. H.



25. Chamberlains Worcester pair of spill vases with vermicelli gilding, painted with landscapes, View near Monmouthshire and Chatsworth Derbyshire, Script mark c. 1820, 3.5 ins H.



26. Chamberlains Worcester spill vase painted with a courting couple in an elaborate gilt panel on a light blue ground, Script mark c. 1815 3.5 ins. H.

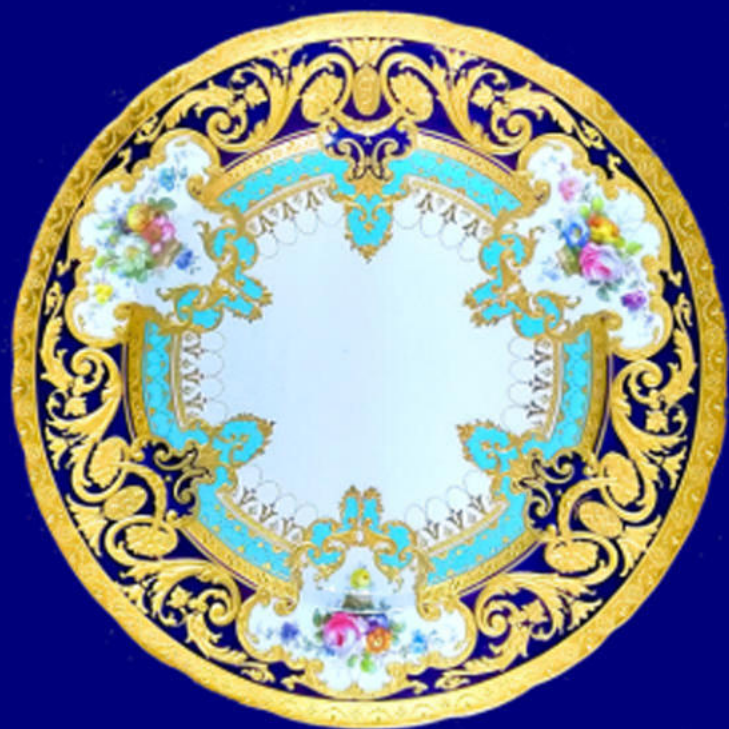




27. Chamberlain Worcester coffee cup and saucer painted with birds in gilt panels on a turquoise ground  
c. 1805, Printed script mark 6.25 ins. D. (S)



28. Chamberlain coffee can and saucer painted in imari style later used for the famous Yeo service, the cup with  
the crest of a dog and the latin motto SEMPER FIDELIS, 'Always Faithful' and initials WPL  
pattern 290 c. 1800, 5.5 ins. D. (S)



29. Royal Crown Derby fine plate painted by Albert Gregory and gilded by George Darlington, both signed. The service was commissioned by Judge Elbert H. Gary, founder of the United States Steel Corporation, and took from 1907 - 10. The service was purchased through Tiffany and Co. and was one of the most expensive ever made. Date mark 1909 10.25 ins. D.



30. Derby King Street factory plate with raised gilt border and gadroon rim, the centre painted with a fine bouquet of flowers on a marble shelf by Harry Sampson Hancock, signed verso c. 1900, puce mark, 8.75 ins. D.





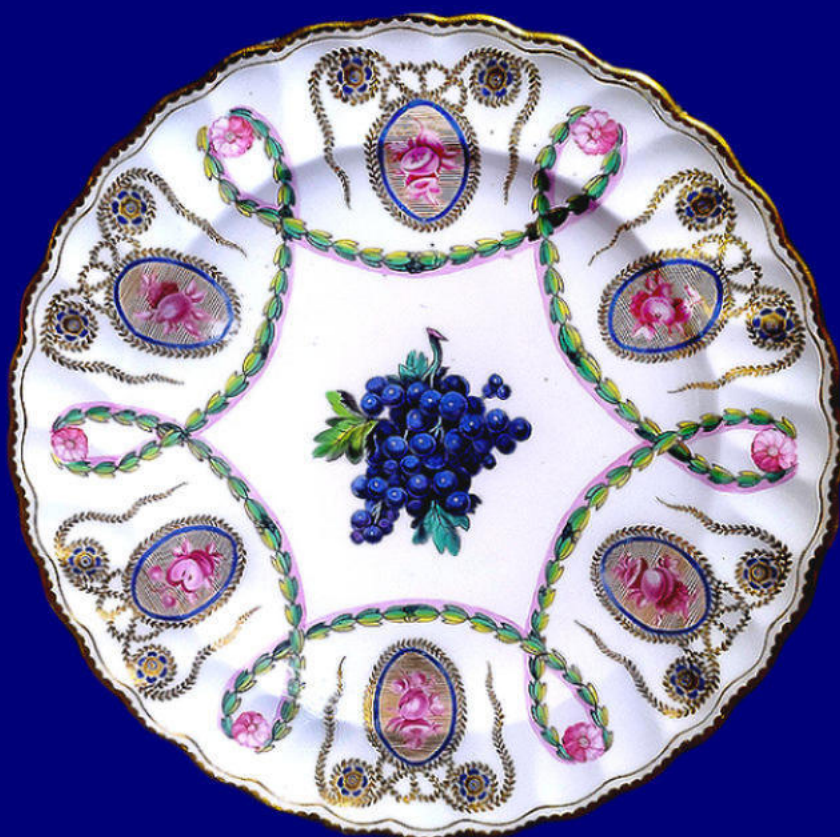
31. Worcester Flight Barr and Barr plate painted with elaborate gilt mirror style panels, three large panels with fancy birds, and ten panels with coloured moths probably by G. Davis c. 1815-20 9.5 ins. D.



32. Worcester Flight Barr and Barr plate painted with 13 sprays of flowers with roses in predominance, the artist undoubtedly influenced by Wm. Billingsley, printed and impressed marks c. 1815-20 8 ins. D.



33. Flight Barr jug painted with hop vines in two tone green, initials JEC in gold under the spout, script mark, c. 1800 7.9 ins. H. Prov: The Flight Collection with label



34. Barr, Flight and Barr plate, in the neo-classical London style with a central bunch of grapes framed by draped garlands, the rim decorated with gilded medallions of fruit in puce, dentil and gold lined rim, Impressed and printed circular mark c. 1810, 8.8 ins. D.





35. Worcester Flight period small bachelors teapot and cover with wrythen moulding highlighted in gold, having two gilt blue borders c. 1800, Blue crescent back 6.5 ins. W.



36. Spode custard cup and cover wrythen moulded and decorated with gold leaves and two gold borders with oval blue and gilt panels, Marked SPODE, c. 1810 3.38 ins. H.



37. Worcester Flight Barr and Barr beautiful teacup and saucer with pink ground, with raised gilt panels painted with flowers c. 1817-20, Printed mark 5.3 ins. D. (S)



38. Worcester Flight Barr teacup and saucer each piece painted with a Scottish landscape, one with a loch and another with viaduct, on a cobalt blue ground, Incised 'B' c. 1802, 5.25 ins. D. (S)





39. Flight, Barr and Barr Worcester armorial coffee cup and saucer, the cup raised on a pedestal foot, the broad blue borders with raised gold neoclassical design, reserved with the crest of Sophia, daughter of the Earl of Coventry and her husband Sir Roger Gresley, Baronet, with the motto 'melyore fyde quan fortuna', 'Better than Fortune' c. 1830 6.25 ins. D. (S)



40. Worcester Flight Barr and Barr teacup and saucer with bouquets and sprigs of flowers and the letter 'S' made of roses, Impressed mark c.1817-20, 6.25 ins. D. (S)



41. Chamberlain's Worcester rare yellow ground root pot or cache pot lavishly painted with flowers in a gilt panel, Script Chamberlains Worcester mark, c.1800-10 6.125 ins. H.



42. Coalport vase probably decorated in the workshop of Thomas Baxter with lavish gilding, and fine flowers, with Church Gresley style decoration verso c. 1810-15, 7.75 ins. H.





43. Worcester Kerr and Binns plate with gadroon rim painted with Madonna and Child, after Raphael, by master painter Josiah Rushton, the cobalt blue border with raised neoclassical gilding  
Impressed mark c. 1762-71, 9.5 ins. D.



44. Royal Worcester casket shaped jewellery box on four feet, the front, back and centre with a oval gilt panel with moulded prunus leaves, the four sides and top with reticulation, although unsigned, it was likely to have been produced by George Owen in the early 1880's, Impressed Royal Worcester mark, 6.25 ins. W.



45. English porcelain vase painted with two seascapes on a island, the neck with gilt classical design, and another on the socle c. 1810 7 75 ins. H



46. English porcelain pair of ewers painted with birds in an oval panel on a sea blue green ground, the birds and shape of the ewers probably indicate a Coalport production c.1850 10.75 ins. H.